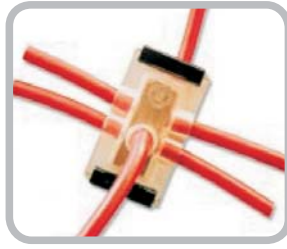
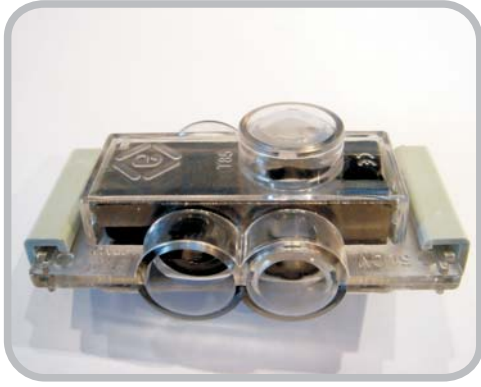




## Morsetti di Derivazione DEVIO a Mantello Per Canali e Passerelle *DEVIO Shunt Terminals For Trunking System*



TERMINAL BLOCKS

MORSETTERIA

I Morsetti DEVIO si usano prevalentemente per giunzioni e derivazioni in canali e passerelle in accordo con le Norme CEI 64/85 art. 526.1 grazie alla loro resistenza meccanica e il grado di protezione Ip20

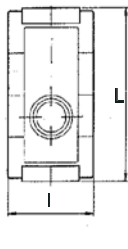
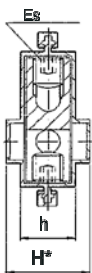
I Morsetti DEVIO permettono di derivazioni dal cavo principale di linea senza interrompere il conduttore, sguainandolo solo nella parte interessata. Gamma di morsetti DEVIO da 1mm<sup>2</sup> a 150mm<sup>2</sup>.

Materiali: Policarbonato Autoestinguente V0 UL94, Ottone CW614N, Viti o Grani zincati RoHS

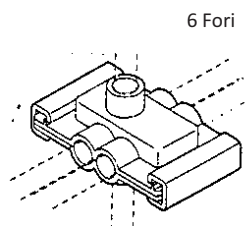
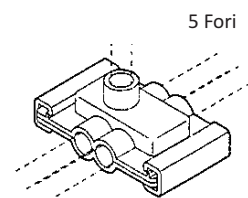
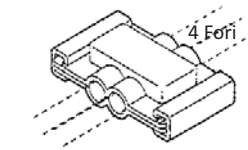
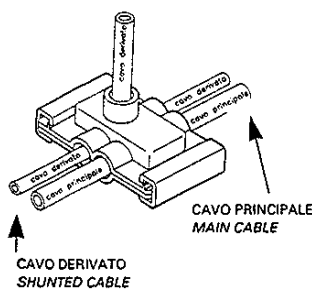
*DEVIO Terminals allow for main line cable branching by simply unsheathing the wire on the area of interest without cutting it. Range of 1mm<sup>2</sup> to 150mm<sup>2</sup>.*

*Materials: UL94 V0 self-extinguishing polycarbonate, Brass CW614N, Screws or Grains zinc plated RoHS compliant*

ARTICOLO	DESCRIZIONE	Sezione mm <sup>2</sup>	Amp	IP20		T85		500V		CE RoHS
				L mm	I mm	H1 - H2 - H3 mm	h mm	Esagono	Conf/Imb	
4Fori 5Fori 6Fori										
K4004 - K5004 - K6004	Morsetto DEVIO	4mm <sup>2</sup>	32A	50	33,5	14 - 22,5 - 31	14	3		5/50
K4006 - K5006 - K6006	Morsetto DEVIO	6mm <sup>2</sup>	41A	56	36	16 - 24,5 - 33	16	4		5/50
K4010 - K5010 - K6010	Morsetto DEVIO	10mm <sup>2</sup>	57A	60	38	17 - 26 - 35	17	5		3/30
K4016 - K5016 - K6016	Morsetto DEVIO	16mm <sup>2</sup>	76A	65	39	19 - 27,5 - 36	19	5		3/30
K4025 - K5025 - K6025	Morsetto DEVIO	25mm <sup>2</sup>	101A	70	41	21 - 29,5 - 38	21	6		2/20
K4035 - K5035 - K6035	Morsetto DEVIO	35mm <sup>2</sup>	125A	79	43	23 - 31,5 - 40	23	6		2/20
K4050 - K5050 - K6050	Morsetto DEVIO	50mm <sup>2</sup>	-	85	45	25 - 33,5 - 42	25	6		1/10
K4070 - K5070 - K6070	Morsetto DEVIO	70mm <sup>2</sup>	-	91	47	27 - 36,5 - 44	27	8		1/10
K4095 - K5095 - K6095	Morsetto DEVIO	95mm <sup>2</sup>	-	104	52	32 - 40,5 - 49	32	8		1/10
K4120 - K5120 - K6120	Morsetto DEVIO	120mm <sup>2</sup>	-	108	55	36 - 45 - 52	36	10		1/10
K4150 - K5150 - K6150	Morsetto DEVIO	150mm <sup>2</sup>	-	113	58	38 - 46,5 - 55	38	12		1/10



\*  
H1 4Fori  
H2 5Fori  
H3 6Fori



MORSETTERIA  
1.0



ACCESSORI  
2.0



GUIDE DIN  
3.0



IMPIANTI TERRA  
4.0